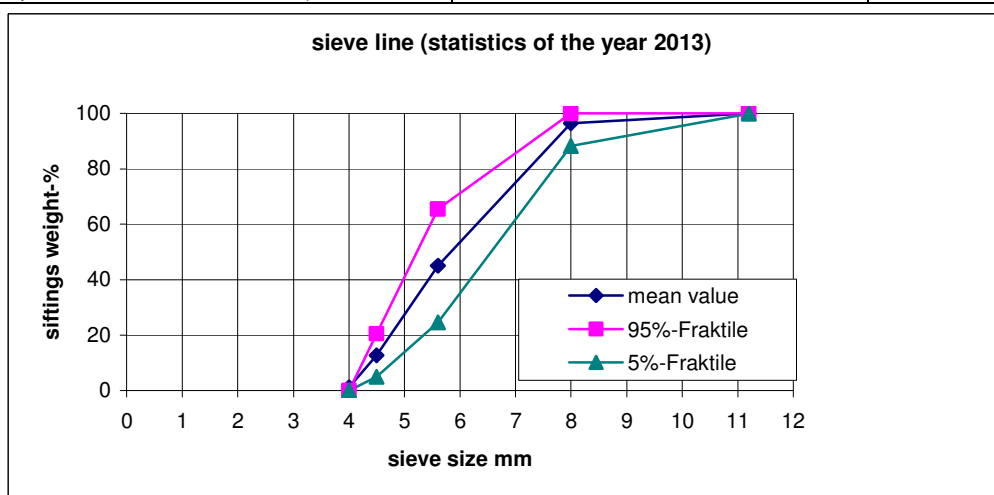


Provisionally Data Sheet

Type	Liaver 4- 8mm		
Main properties Kind of material Shape	Expanded glass granules spheric, closed surface		Leightweight aggregate according to EN 13055-1
Geometrical properties Grain size Dust (<0,063mm)	4 - 8mm < 1mm		Test method EN 933-1 EN 933-1
Physical properties Loose bulk density Particle density Crushing resistance	170 ± 15% 300 ± 15% ≥ 1.9	kg/m ³ kg/m ³ N/mm ²	EN 1097-3 DIN V 18004 Following EN 13055-1 Annex A Procedure 1
Chemical properties Chloride Acid soluble sulfat Total sulfur	< 0.01 < 0.1 < 0.1	weight-% weight-% weight-%	DIN EN 1744-1
Chemical Composition SiO ₂ Al ₂ O ₃ Na ₂ O Fe ₂ O ₃ CaO MgO K ₂ O Trace elements	71 ± 2 2 ± 0.3 13 ± 1 0.5 ± 0.2 8 ± 2 2 ± 1 1 ± 0.2 < 0.5	weight-% weight-% weight-% weight-% weight-% weight-% weight-% weight-%	DIN 51001
Other properties Thermal conductivity λ _R Classification of fire Water vapour diffusion resistance factor μ VOC-class (French regulation of VOC from construction products Decret No. 2011-321)	0.07 A1 5 A+	W/(mK) (very weakly emission)	DIN EN 12667 DIN 4102-4 DIN 4108-3 ISO 16000; DIN EN 717-1



Liaver GmbH & Co. KG
Gewerbepark „Am Wald“ 17
D-98693 Ilmenau

Internet: www.liaver.com

E-Mail: Info@liaver.com

Fon +49 (3677) 8629 0
Fax +49 (3677) 8629 30

Liaver®
expanded-glass
technologies

01/2014 St